

## MAJOR WORKS

Browse below for up to date information on current capital works and major projects across the Dubbo LGA:



### Rygate Park Redevelopment, Wellington: Stage 2

Stage 2 of the Rygate Redevelopment will transform the recreational space used by many sporting groups across the region.



### Wellington Caves Visitor Experience Centre

The Wellington Caves Visitor Experience Centre will be a welcome addition to the heritage listed Wellington Caves attraction, improving aesthetic and visitor engagement the door way to the Great Western Plains.



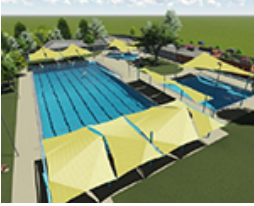
### Wiradjuri Tourism Experience - Wellington

The Wiradjuri Tourism Experience will allow visitors to gain an understanding and appreciation for the beliefs of the local Wiradjuri people.



### Wiradjuri Tourism Experience - Dubbo

The Wiradjuri Tourism Experience will allow visitors and the community to the oldest culture in the world.



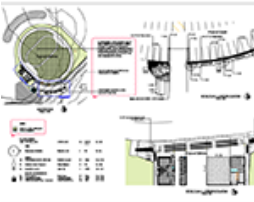
#### Wellington Memorial Pool Redevelopment

The Wellington Memorial Pool will undergo the first redevelopment in the pool's history.



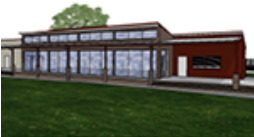
#### SES/VRA Headquarters, Dubbo

This project has developed from a submission to the Minister for Emergency Services from 2012 requesting a new headquarters for the SES.



#### Victoria Park Cycling Redevelopment

The relocation of the cycling facility from Victoria Park to River Road is Stage 1 of the Victoria Park upgrade, which has received funding from the State Government.



#### Victoria Park Ovals Redevelopment

The development of the playing surface at No.1 Oval to be a full size cricket field, a new club house/amenities building.



#### Dubbo Regional Livestock Market Truck Wash

The installation of a new and improved truck wash at the live stock markets will increase the sites efficiency by decreasing waiting times allowing for more efficient movement of vehicles through the wash and back to work.



#### Dubbo Regional Airport Upgrades

The General Aviation Expansion and Aeromedical Facility will include 11 new hangar development with associated taxiways, access roads, water, sewer, stormwater and electrical services.



### NSW Rural Fire Service Training Academy

The Academy will be used by the NSW Rural Fire Service as the main facility to develop its training programs for staff and volunteers.



### Hire Car Park at Dubbo Regional Airport

Construction of a 120 space car park for Hire Cars at Dubbo City Regional Airport.

Last Edited: 17 May 2019

## I'M LOOKING FOR



### BEAT THE HEAT

A statewide heat wave has been declared across NSW. Check out some of the services Council provide f ...

[Read more](#)