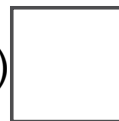




[\(https://yoursay.dubbo.nsw.gov.au/\)](https://yoursay.dubbo.nsw.gov.au/)

Login / Join(<https://yoursay.dubbo.nsw.gov.au/login>)



Annual Bulky Rubbish Collection

The annual kerbside collection for bulky rubbish will commence in October 2023 for residents of Wellington, Dubbo and surrounding villages and rural areas.

+ Follow

YourSay | Dubbo Region (<https://yoursay.dubbo.nsw.gov.au/>) / 2023 Bulky Rubbish Collection

Here is an overview of all the activities involving community for the purpose of participation.

View here
(https://yoursay.dubbo.nsw.gov.au/download_?le/view/1215/571)

Overview

Our annual kerbside bulky rubbish clean up is set to commence in October 2023. Those residents familiar with our annual kerbside collection will notice zones now have names aligned to locations and adopted colours and contrast for improved accessibility.

The Annual DRC Bulky Waste Collection allows materials to be separated upon presentation, which intern provides a positive re-use or recycling opportunity for materials that may otherwise end up in a landfill. In addition, the service allows residents to display items during Bulky that can't be placed in domestic bins due to size and/or weight.

For residents who are unsure of their collection zone or would like to make sure they are placing their rubbish out on the correct day, we have an interactive map that allows you to enter your address and the map will present your collection zone and details for your collection.

This year's collection will see the implementation of a Bulky Rubbish Notification Slip. Residents who receive this slip will be notified if:

- rubbish has been placed out before the 7-day collection date
- bulky items are on the prohibited list
- bulky items are too large or heavy
- bulky items are from a commercial property

Residents have 2 business days from the dated notice to discuss recollection options with council. Under the Protection of the Environment Operations Act 1997, Section 143 Council may issue Penalty infringements of up to \$2000 to an individual who does not remove all excess rubbish requested from the front of their property after this time period.

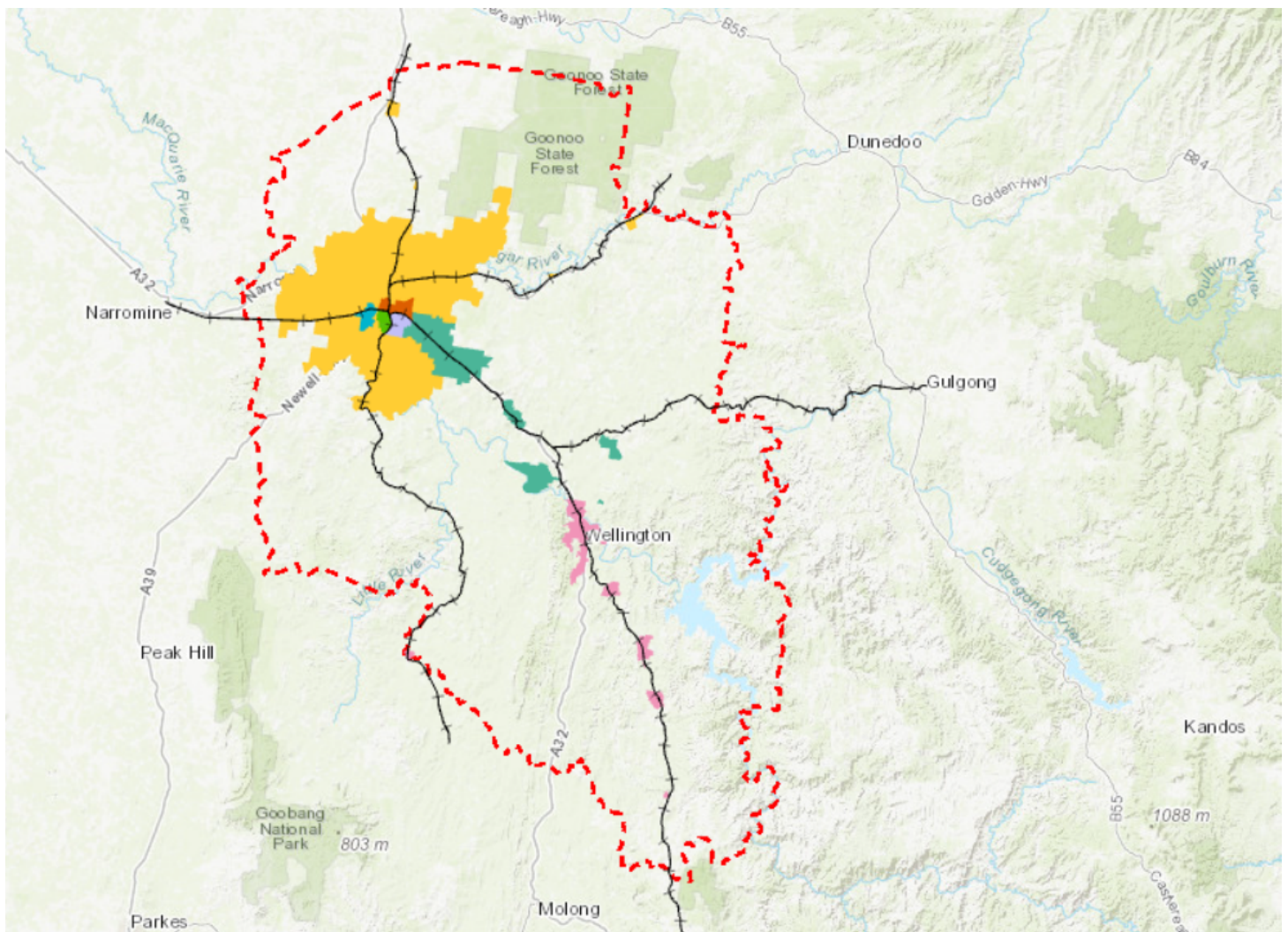
Take our survey on the delivery of our 2023 Bulky Rubbish Collection to guide us for the future.

SURVEY NOW CLOSED

(<https://yoursay.dubbo.nsw.gov.au/2023-bulky-rubbish-collection/2023-bulky-rubbish-program-provide-your-feedback>)

Updates on collection status

Keep up to date on the progress of collection zones, we will drop a pin to indicate which zone is currently under collection.



Do you know what zone you live in?
Enter your address here and our
map will show you!

View here
(<https://maps.dubbo.nsw.gov.au/portal/apps/webappviewer/index.html?id=f83d065292f54eaca42a849f635c8964>)

Approved items

Items for collection must be:

- placed out no earlier than 7 days before your zone
- within one level box trailer load or one cubic metre per residence.
- set aside, for whitegoods and metal items.
- placed to the side for green waste, excluding clippings.
- no more than 2 mattresses
- no more than 4 passenger tyres

Prohibited items

The following will not be collected if:

- it is hazardous waste, liquids or batteries
- identified as building waste
- industrial truck or tractor tyres

Missed collection

If your collection was missed, please call Council to report and arrange recollection within 2 business days of missed collection.

To avoid a missed collection, your bulky rubbish should be placed out on the Sunday prior to your collection period.

Contact: 02 6801 4000

Bulky notification slip

If residents find a notice in their mailbox suggesting uncollected items should be removed, they are requested to remove all rubbish remained on kerb or have 2 business days to rectify any issues and contact Council to discuss recollection options.

Contact: 02 6801 4000

Failure to comply

A letter will be issued to residents who fail to comply with the direction on their notification giving them a 7ve business day window to remove the rubbish.

If the residents don't comply with the letter after the period, Council may issue penalty infringements of up to \$2000 to an individual who does not remove all excess rubbish requested from the front of their property.

Commercial bulky rubbish

Please note this bulky rubbish service is for residential premises only, commercial waste is the responsibility of the business to engage waste services.

Waste education for business ?

Do you have a question?

Closed

Please allow up to two business days for a response. You can also search and review previous questions and answers.

T Who's Listening?



Collection Timeline

?

2023 Bulky Rubbish Collection

September 2023

Residents within Wellington, Dubbo and surrounding villages and rural areas will begin to see communications informing of the upcoming 2023 Bulky rubbish collection.

Follow this page to receive updates!

?

Sunday 8 October | South East

Residents within the South East (Purple Zone)

- Bulky rubbish placement within 7 days prior to Sunday 8 October 2023
- Collection Commences Monday 9 October 2023

?

Sunday 15 October | North East

Residents within the North East (Orange Zone)

- Bulky rubbish placement within 7 days prior to Sunday 15 October 2023
- Collection Commences Monday 16 October 2023

?

Sunday 22 October | West

Residents within the West (Blue Zone)

- Bulky rubbish placement within 7 days prior to Sunday 22 October 2023
- Collection Commences Monday 23 October 2023



Sunday 5 November | Central South

Residents within the Central South (Green Zone)

- Bulky rubbish placement within 7 days prior to Sunday 5 November 2023
- Collection Commences Monday 6 November 2023



Sunday 12 November 2023 | Wellington

Residents within the Wellington (Pink Zone)

- Bulky rubbish placement within 7 days prior to Sunday 12 November 2023
- Collection Commences Monday 13 November 2023
Wellington, Nanima, Euchareena, Stuart Town, Mumbil, Dripstone, Wellington Caves and North Yeoval.



Sunday 19 November | Rural East

Residents within the Rural East (Teal Zone)

- Bulky rubbish placement within 7 days prior to Sunday 19 November 2023
- Collection Commences Monday 20 November 2023
Bodangora, Cadonia Estate, Ponto Falls, Geurie, Wongarbon, Firgrove Estate & residences located outside 50/60kph speed zone within the Friday collection areas.



Sunday 26 November | Rural

Residents within the Rural (Yellow Zone)

- Bulky rubbish placement within 7 days prior to Sunday 26 November 2023
- Collection Commences Monday 27 November 2023
Elong Elong, Ballimore, Richmond Estate, Brocklehurst, Mogriguy, Eumungerie & residences located outside 50/60kph speed zone within all collection areas excluding Friday.



Community survey

At the end of this program, we want to hear from you! Make sure you join our YourSay community to provide feedback on the Bulky Rubbish Program for 2023. Survey will close 9am, Friday 22 December 2023.



Project Complete

An engagement snapshot will include results from your feedback.

See less

Council News

KERBSIDE BULKY RUBBISH COLLECTION COMING

(<https://www.dubbo.nsw.gov.au/news-and-media/news-and-resources/council-news/2023/kerbside-bulky-rubbish-collection-coming>)

CHANGES COMING FOR NEXT KERBSIDE COLLECTION

(<https://www.dubbo.nsw.gov.au/news-and-media/news-and-resources/council-news/2023/changes-coming-for-next-kerbside-collection>)

Links & Resources

Rubbish, Recycling & Sustainability Dubbo Region

(<https://www.dubbo.nsw.gov.au/Households---Residents/rubbish-recycling-sustainability>)

Tipping Vouchers (<https://www.dubbo.nsw.gov.au/Households-Residents/Rubbish-Recycling-and-Sustainability/tipping-vouchers>)

Bulky Rubbish Collection (<https://www.dubbo.nsw.gov.au/Households-Residents/Rubbish-Recycling-and-Sustainability/bulky-rubbish-collection>)

Domestic waste management (<https://www.dubbo.nsw.gov.au/Households---Residents/Rubbish--Recycling-and-Sustainability/domestic-waste-management>)

Pollution & illegal dumping (<https://www.dubbo.nsw.gov.au/Our-Region-Environment/Natural-environment/pollution-and-illegal-dumping>)

CLIMATE CHANGE (<https://www.dubbo.nsw.gov.au/our-region-environment/natural-environment/climate-change>)

We would like to hear from you! Take our quick polls below.

Will you use bulky rubbish collection service this year?

This poll has concluded.

Total Votes: 136

What bulky rubbish service would you prefer?

This poll has concluded.

Total Votes: 107

Which zone do you live in?

This poll has concluded.

Total Votes: 273

By joining our online community you will be the first to know on a range of projects, policies and works underway in the Dubbo Region.

Join now (<https://yoursay.dubbo.nsw.gov.au/register>)

For further information



Resource Recovery & Efficiency

Dubbo Regional Council

(02) 6801 4000

Please select the +follow button at the top of this page to receive updates about this project, including notification of when it will be considered at Council meetings.

Ready to have your say?

Keep up to date and have your say about the future of our community.

[Sign up \(/register\)](/register)

[Login \(/login\)](/login)

[Return to top of page](#)

Contact Us

? (02) 6801 4000

? www.dubbo.nsw.gov.au (<http://www.dubbo.nsw.gov.au>)

? P.O. Box 81
Dubbo NSW 2830

Get in touch online (<https://yoursay.dubbo.nsw.gov.au/contactus>)

Social Media

- ? [Facebook \(https://www.facebook.com/DubboRegionalCouncil\)](https://www.facebook.com/DubboRegionalCouncil)
- ? [Instagram \(https://www.instagram.com/dubboregionalcouncil\)](https://www.instagram.com/dubboregionalcouncil)
- ? [LinkedIn \(https://au.linkedin.com/company/dubbo-regional-council\)](https://au.linkedin.com/company/dubbo-regional-council)
- ? [X \(https://twitter.com/DubboCouncil\)](https://twitter.com/DubboCouncil)

ACKNOWLEDGEMENT

We pay our respects to the Traditional Owners of the lands where we work as well as across the lands we travel through.

We also acknowledge our Elders past, present and emerging.

Privacy Policy

<https://yoursay.dubbo.nsw.gov.au/privacy-policy> |

Terms of Use

<https://yoursay.dubbo.nsw.gov.au/terms-use> |

Accessibility



<https://www.socialpinpoint.com/>

<https://yoursay.dubbo.nsw.gov.au/accessibility> |

[Moderation](#)

<https://yoursay.dubbo.nsw.gov.au/moderation> |

[Translation Disclaimer](#)

<https://yoursay.dubbo.nsw.gov.au/translation-disclaimer>

© 2024 [YourSay \(/\)](#). All rights reserved.

[Log In to Site](#)

<https://yoursay.dubbo.nsw.gov.au/login>